



ECO2

powerful and affordable B&W system



CHISON
Value Beyond Imaging

Advanced Imaging Technologies



Ergonomics

- Rotatable LED (0~30°) : tailor to different viewing angles
- Ultra-compact & Ultra-light
- Easy to carry
- Keyboard : For easy and quick access
- Dedicated cart TR 9000
- Streamlined workflow

ECHO

- Advanced technologies:
i-Image(Intelligent image optimization)
THI(Tissue Harmonic Image)
SRA(Speckle Reduction Algorithm)
Compound imaging
- Full digital beam-former
- Trapezoid
- Automatic PW trace
- Chroma
- Full screen display mode
- AIO(Automatic image optimization)

Economic

- The latest platform & more advanced chip-set: brings you better image quality and features at less cost in a more compact box
- Support PC printer, reduce investment & day to day paper cost
- 8G memory card
- 320G harddisk (option)
- Vehicular Charging

ECO-friendly

- Less radiation
- Less power consumption
- Longer usage life: LED
- Longer battery standby time: >2 hours

Support PC Printer



ECO2



Traditional Ultrasound

Connect PC Printer



PC Printer

A4 Paper



Benefits

- PC printer is less expensive than video printer
- A4 paper saves more cost than thermal paper for everyday use
- Detail report can be printed (with images, measurement results, patient information)

Connect Video Printer



Video Printer

Thermal Paper



- More expensive
- Can ONLY print images

Excellent PW resolution and automatic
PW trace measurement will greatly improve the diagnosis confidence
by delivering both qualitative & quantitative results.

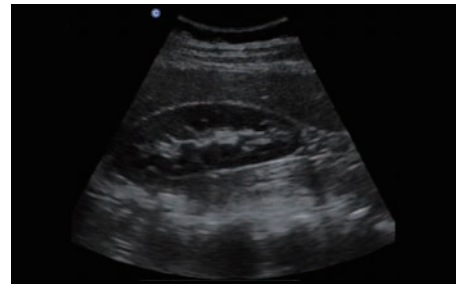
Great image quality



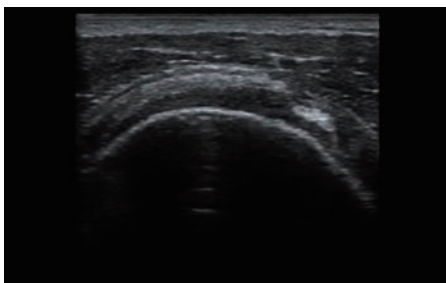
Median Sagittal Section, B Mode



Early Pregnancy, B Mode



Kidney, B Mode



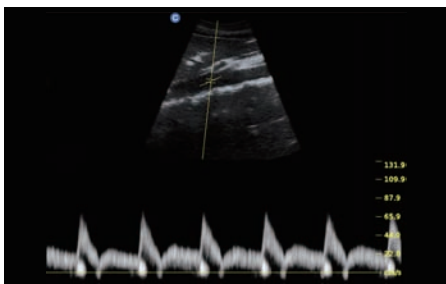
Subscapularis Tendon, B Mode



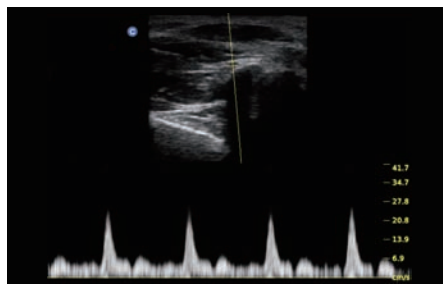
Thyroid, B Mode



Gallbladder, B Mode



Aorta Artery, PW Mode



Thumb Artery, PW Mode



Carotid, PW Mode



Convex C3-A



Linear L7M-A



Linear L7S-A



Micro-Convex MC3-A



Transrectal R7-A



Transvaginal V6-A



Micro-Convex MC6-A

CHISON MEDICAL IMAGING CO., LTD.

Sales & Service Contact Address:

No. 9 Xin Hui Huan Road, New District, Wuxi, Jiang Su Province, China 214028

TEL: 0086-510-85310593 / 85310937 **FAX:** 0086-510-85310726 **EMAIL:** export@chison.com.cn

Click the link below to follow us:



We reserve the right to make changes to this catalogue without prior notice.
Please contact us or your local dealer for the latest information.
*Please refer to the user manual for details.

E-ECO2 161025